

Core Industrial Gas Range



Contact Us

Your stockist is here to help.

Stockist:

Email:

Phone:

Website:

Alternatively, contact Air Products directly:

apukinfo@airproducts.com

UK - 0800 389 0202

IE - 1800 99 50 29

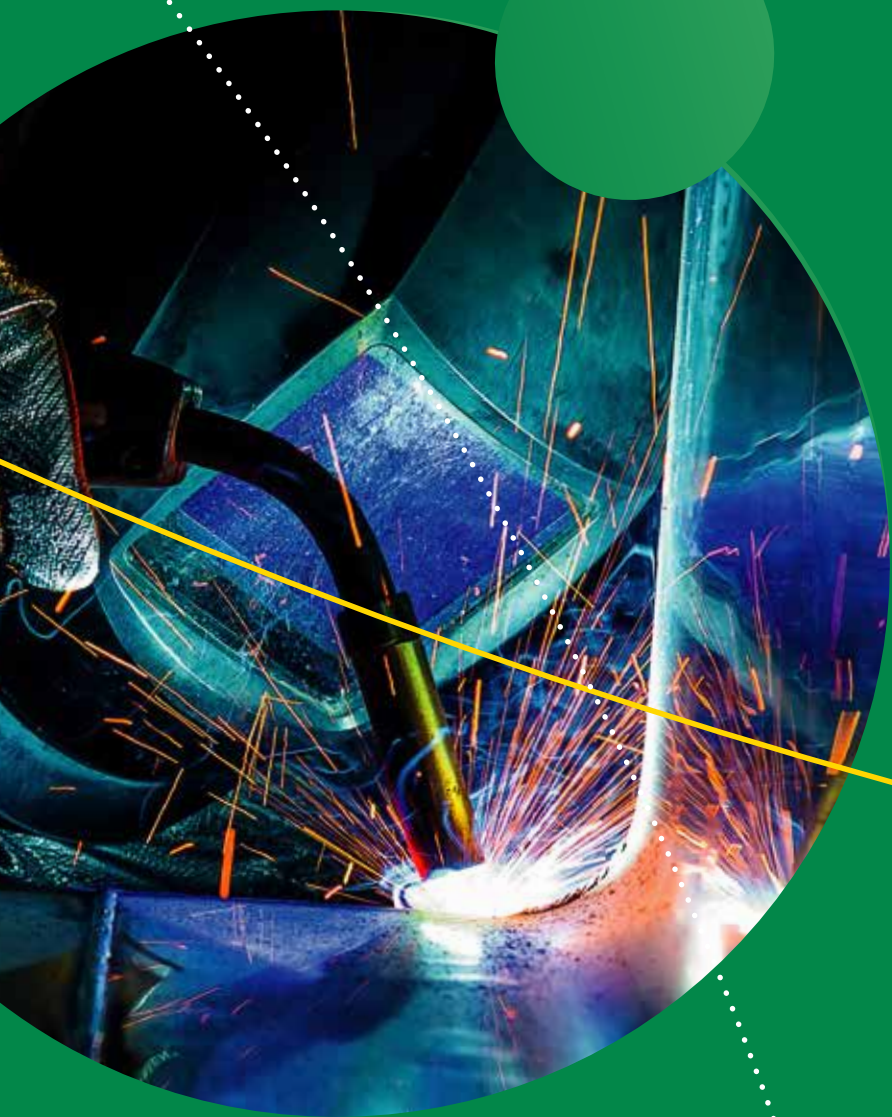
UK - airproducts.co.uk

IE - airproducts.ie



Contents

• Welding Gases	5	• Supply Modes	26
• Fuel Gases	8	• Invoicing	27
• Food & Drink	10	• Rental Scheme	28
• Balloon Gases	12	• How to Order	29
• Pure Gases	15	• Delivery	29
• Core Equipment	19		



Welding Gases



Ferromaxx® Gas Our best gas for carbon steel welding

For material less than 10mm thickness

PR Code	Product	Size	Contents	Pressure	Valve	Weight kg	Rental code	Return code
14413	Ferromaxx® 7 - Integra®	X30S	9.21 m³	300	Quick connect	65.64 kg	D19	13462
14416	Ferromaxx® 7	X47S	14.43 m³	300	NEVOC	102.06 kg	D07	13469

For material greater than 10mm thickness

PR Code	Product	Size	Contents	Pressure	Valve	Weight kg	Rental code	Return code
403546	Ferromaxx® 15 - Integra®	X30S	9.95 m³	300	Quick connect	65.64 kg	D19	13462
14407	Ferromaxx® 15	X47S	15.05 m³	300	NEVOC	102.06 kg	D07	13469

Alternative gases for carbon steel welding

PR Code	Product	Size	Contents	Pressure	Valve	Weight kg	Rental code	Return code
14391	5% CO ₂ / 2% O ₂ in Argon (M14ArCO5/2)	X10S	2.15 m³	200	BS3	23.63 kg	D01	12917
14393	5% CO ₂ / 2% O ₂ in Argon (M14ArCO5/2)	X47S	10.09 m³	200	BS3	84.00 kg	D01	12936
14383	15% CO ₂ / 2% O ₂ in Argon (M24ArCO15/2)	X47S	10.64 m³	200	BS3	85.12 kg	D01	12936
14776	8% CO ₂ in Argon (M20ArC8)	X47S	10.23 m³	200	BS3	84.37 kg	D01	12974
6007520	20% CO ₂ / 2% O ₂ in Argon (M26ArCO20/2 - Integra®)	X30S	17.01 m³	300	Quick connect	65.64 kg	D19	13462
177178	20% CO ₂ in Argon (M21ArC20 - Integra®)	X30S	9.85 m³	300	Quick connect	66.25 kg	D19	177179

Inomaxx® Gas Our best gas for stainless steel welding

PR Code	Product	Size	Contents	Pressure	Valve	Weight kg	Rental code	Return code
160258	Inomaxx® 2 - Integra®	X30S	9.00 m³	300	Quick connect	64.49 kg	D19	177179
14565	Inomaxx® 2	X47S	14.09 m³	300	NEVOC	87.97 kg	D07	500894
500775	Inomaxx® TIG - Integra®	X30S	8.87 m³	300	Quick connect	63.97 kg	D19	500871

Alumaxx® Gas Our best gas for aluminium welding

PR Code	Product	Size	Contents	Pressure	Valve	Weight kg	Rental code	Return code
160259	Alumaxx® Plus - Integra®	X30S	8.14 m³	300	Quick connect	59.29 kg	D19	160260

M26 MAG Welding For carbon and carbon/manganese steels welding

PR Code	Product	Size	Contents	Pressure	Valve	Weight kg	Rental code	Return code
14387	M26ArCO20/2	X47S	10.98 m³	200	BS3	85.80 kg	D01	12936
6007520	M26ArCO20/2	X30S	17.01 m³	300	IFO	64.45 kg	D19	13462

The background is a solid orange color. It features several large, semi-transparent orange circles of varying sizes. A dotted white line curves diagonally from the top left towards the bottom right. A solid yellow line also curves diagonally, starting from the left edge and ending at the bottom right, positioned below the dotted line.

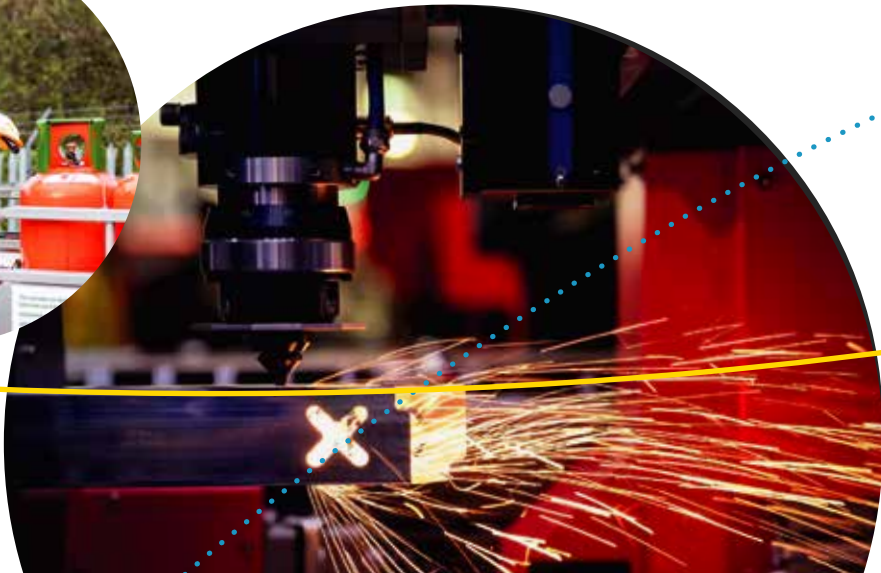
Fuel Gases

Propane

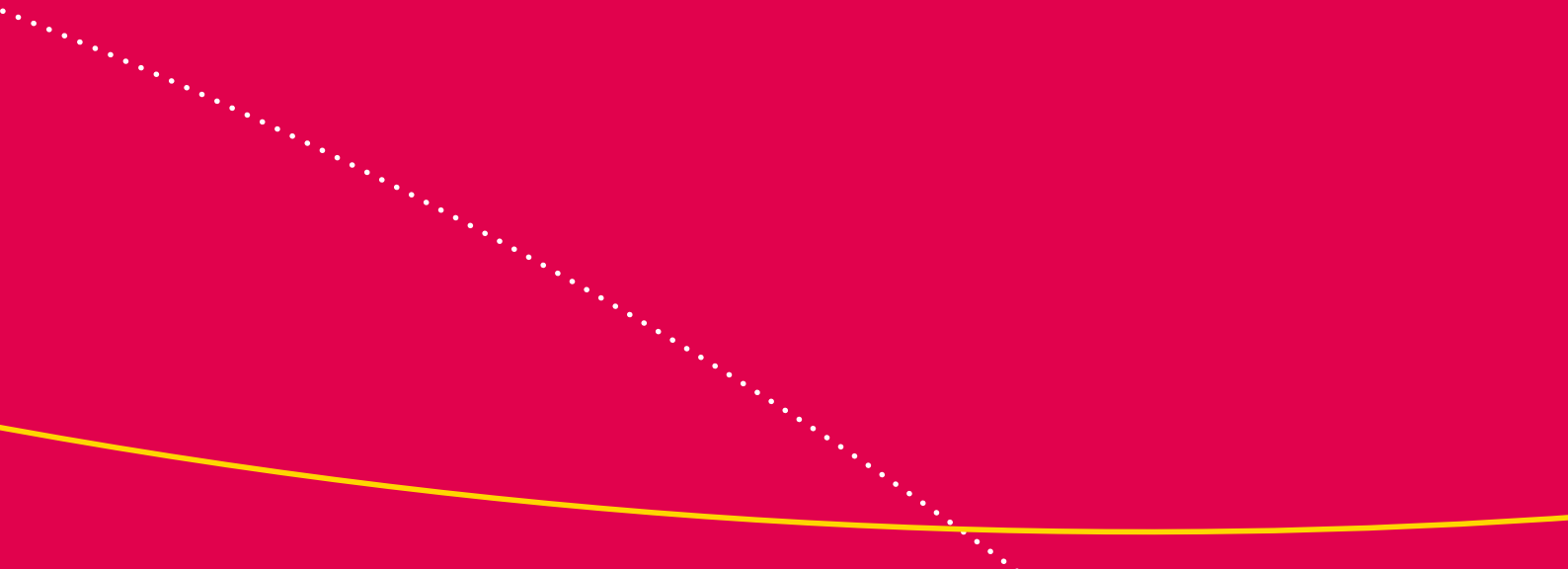
PR Code	Product	Size	Contents	Valve	Weight kg	Rental code	Return code
14713	Propane Fuel Gas	X108S	47 kg	BS4	84 kg	D06	12994
14722	Propane Fuel Gas	X43S	19 kg	BS4	42 kg	D06	12985
14720	Propane Fuel Gas FLT Liquid	X43S	18 kg	¼ " RH Male	41 kg	D06	12972

Acetylene

PR Code	Product	Size	Contents	Valve	Weight kg	Rental code	Return code
123805	Acetylene Industrial	X30S Int	6 kg	CCA Integra®	60 kg	D35	123806
14240	Acetylene Industrial	X50S	8.7 kg	BS4	87 kg	D24	12938



Food & Drinks Gases



Food & Drinks Gases

PR Code	Product	Size	Contents	Pressure	Valve	Rental code	Return code
14749	Freshline® Drinks 30	X30S	9.563 m ³	200 bar	BS3	D01	12956
14751	Freshline® Drinks 60	X30S	12.927 m ³	160 bar	BS3	D01	12956
14752	Freshline® CO ₂	X10S	7.200 kg	49.9 bar	BS8	D01	12898
14753	Freshline® Drinks CO ₂	X30S	22.500 kg	49.9 bar	BS8	D01	12908
58132	CO ₂ Freshline® Food	X47S	34 kg	58 bar	BS8	D33	58160
58133	Carbon Dioxide - Food	X47S	34 kg	58 bar	BS8	D33	58161
58136	Freshline® N ₂	X47S	8.92 m ³	200 bar	BS3 RPV	D33	58164
58138	Freshline® Oxygen	X47S	10.12 m ³	200 bar	BS3 RPV	D33	58166
58143	Freshline® 30% CO ₂ in O ₂	X47S	12.29 m ³	200 bar	BS3 RPV dip tube	D33	58167



Balloon Gases

The background is a solid yellow color. It features two decorative lines: a solid blue line that starts from the left edge and slopes downwards towards the right, and a dotted white line that starts from the top edge and slopes downwards towards the right, intersecting the blue line.

Balloon Gases

PR Code	Product	Size	Contents	Pressure	Valve	Weight kg	Rental code	Return code
14486	Balloonium®	X10S	1.81 m³	200 bar	BS3	18 kg	D01	12909
14489	Balloonium® Integra®	X10W	2.61 m³	300 bar	Quick Connect	12 kg	D11	14147
14496	Balloonium® Integra®	X20W	5.21 m³	300 bar	Quick Connect	25 kg	D11	14148
14499	Balloonium® Integra®	X30S	7.82 m³	300 bar	Quick Connect	49 kg	D05	14149

Balloonium® Number filled per cylinder

Size	9" Latex	10" Latex	11" Latex	12" Latex	16" Latex	18" Foil
X10S	216	200	140	115	45	125
X10W	310	290	200	165	65	180
X20W	620	575	400	330	130	360
X30S	935	860	605	495	195	535





Pure Gases

Argon - Ar

Nitrogen - N⁷

Oxygen - O₂

Carbon Dioxide - CO₂



Argon Inert, versatile gas used in welding and many other applications

PR Code	Product	Size	Contents	Pressure	Valve	Weight kg	Rental code	Return code
169034	Argon Technical - Integra®	X10W	3.03 m ³	300 bar	Quick-fit	17.01 kg	D11	169035
14292	Argon Technical - Integra®	X30S	9.08 m ³	300 bar	Quick-fit	64.38 kg	D19	12933
14296	Argon Technical	X47S	11.32 m ³	230 bar	BS3	85.94 kg	D08	12962

Nitrogen Inert gas ideal for blanketing, purging and freezing

PR Code	Product	Size	Contents	Pressure	Valve	Weight kg	Rental code	Return code
14620	Nitrogen Technical	X10S	1.89 m ³	200 bar	BS3	22.24 kg	D01	12969
14625	Nitrogen Technical	X30S	5.68 m ³	200 bar	BS3	54.26 kg	D01	12970
14626	Nitrogen Technical	X47S	8.89 m ³	200 bar	BS3	77.47 kg	D01	12973

Oxygen Combustible gas (note – gases listed below are not medical grade)

PR Code	Product	Size	Contents	Pressure	Valve	Weight kg	Rental code	Return code
14675	Oxygen Industrial	X10S	2.13 m ³	200 bar	BS3	22.88 kg	D01	12997
14680	Oxygen Industrial	X30S	6.39 m ³	200 bar	BS3	56.18 kg	D01	12971
123532	Oxygen Industrial - Integra®	X30S	9.15 m ³	300 bar	Quick-fit	61.64 kg	D26	123533
14684	Oxygen Industrial	X47S	10.00 m ³	200 bar	BS3	80.48 kg	D01	12979

Carbon Dioxide / CO₂

PR Code	Product	Size	Contents	Pressure	Valve	Weight kg	Rental code	Return code
14345	CO ₂ - gas	X10S	7.20 kg	58 bar	BS8	27.2 kg	D01	12962
14356	CO ₂ - gas	X30S	21.61 kg	58 bar	BS8	69.6 kg	D01	12896
14360	CO ₂ - gas	X47S	34.00 kg	58 bar	BS8	104 kg	D01	12916
14346	CO ₂ - liquid	X10S	7.20 kg	58 bar	BS8	27.2 kg	D01	12885
14358	CO ₂ - liquid	X30S	21.60 kg	58 bar	BS8	69.6 kg	D01	12906
14362	CO ₂ - liquid	X47S	34.00 kg	58 bar	BS8	104 kg	D01	12925



Core Equipment



Core Equipment

Regulators

EQ Code	Description	Max Inlet (bar)	Delivery pressure	Max Flow (m3/h)	Inlet connection
464531	Single-stage Argon / mix regulator	230	Max 3.5 bar	0-40 lpm	BS341 No3 (5/8" BSP)
464530	Single-stage Argon / mix regulator	300	Max 3.5 bar	0-30 lpm	NEVOC
466782	Single-stage inert 4 bar regulator	230	0-4 bar	105	BS341 No3 (5/8" BSP)
464532	Two-stage inert 4 bar regulator	230	0-4 bar	85	BS341 No3 (5/8" BSP)
466783	Single-stage inert 10 bar regulator	230	0-10 bar	175	BS341 No3 (5/8" BSP)
464533	Two-stage inert 10 bar regulator	230	0-10 bar	100	BS341 No 3 (5/8" BSP)
464536	Single-stage Acetylene regulator	25	0-1.5 bar	30	BS341 No4 (5/8" BSP)
464537	Single-stage Propane/Propylene guage regulator	25	0-4 bar	16.5	BS341 No4 (5/8" BSP)
466785	Single-stage Propane/Propylene regulator	25	0-4 bar	16.5	BS341 No4 (5/8" BSP)
466787	Single-stage CO ₂ regulator	230	0-10 bar	155	BS341 No8 (0.860" x 14 tpi)
464539	Two-stage CO ₂ regulator	230	0-10 bar	100	BS341 No8 (0.860" x 14 tpi)
466784	Single-stage Oxygen regulator	230	0-4 bar	105	BS341 No3 (5 / 8 BSP)
464534	Single-stage Oxygen regulator	230	0-10 bar	175	BS341 No3 (5 / 8 BSP)

Hoses

PR Code	Description	Service
18109	10m long x 8mm bore, 3/8 “ BSP HCV to 3/8” BSP nut	Acetylene
18108	10m long 8 x 8mm bore, 3/8” BSP HCV to 3/8” BSP nut	Propane
18153	10m long x 8mm bore, 3/8” BSP HCV to 3/8” BSP nut	Oxygen
18152	5m long x 8mm bore, 3/8” BSP HCV to 3/8 BSP nut18151	Acetylene
18151	5m long x 8mm bore 3/8” BSP HCV TO 3/8 BSP nut	Oxygen
199950	60mm 230 bar manifold hose anti whip (3/8” BSP swivel nut one end and 5/8” LH)	Nitrogen
403130	1800mm 230 bar manifold hose anti whip (3/8” BSP swivel nut one end and 5/8” LH)	Fuel Gas
199888	45 bar nitrogen hose (3/8” BSP swivel – 3/8” swivel) 20m	Nitrogen
199887	45 bar nitrogen hose (3/8” BSP swivel – 3/8” BSP swivel)	Nitrogen



Core Equipment

Flashback Arrestors

EQ Code	Cylinder	Type	Service	Inlet	Outlet	Max pressure
124523	Integra®	Non-resettable	Oxygen	Integra® quick-fit	3/8" BSP (male) right-hand thread	15
124524	Integra®	Non-resettable	Acetylene	Integra® quick-fit	3/8" BSP (male) left-hand thread	1.5
18171	Standard	Resettable	Oxygen	3/8" BSP (female) right-hand thread	3/8" BSP (male) right-hand thread	15
18169	Standard	Resettable	Fuel gases	3/8" BSP (female) left-hand thread	3/8" BSP (male) left-hand thread	1.5
18175	Standard	Non-resettable	Oxygen	3/8" BSP (female) right-hand thread	3/8" BSP (male) right-hand thread	25
18174	Standard	Non-resettable	Fuel gases	3/8" BSP (female) left-hand thread	3/8" BSP (male) left-hand thread	1.5

Adapters

EQ Code	Description
18197	Adaptor, 90 degree left hand thread
18154	Adaptor, 90 degree right hand thread
18199	Adaptor, straight, left hand thread
18198	Adaptor, straight, right hand thread
403143	¼ " NPT male RH – 3/8 " BSP male RH
402774	NEVOC – BS3 bull nose adaptor

Tails

EQ Code	Description
18141	¼ tail (for 6.3mm) to take 3/8" BSP nut
18139	5/16 tail (for 8mm hose) to take 3/8" BSP nut

Nuts

EQ Code	Description
18135	3/8" BSP RH
18136	3/8" BSP LH

Couplers

EQ Code	Description
18143	Coupler 3/8" BSP to 3/8" BSP LH
18142	Coupler 3/8" BSP to 3/8" BSP RH

Hardware

EQ Code	Description
18111	Drop forged combination spanner
404462	Single cylinder trolley for standard h.p. (X47S)
404461	Single cylinder trolley for standard h.p. (X30S)
18114	Twin cylinder trolley to carry Integra® cylinders O ₂ and Acetylene
419128	Twin cylinder trolley to carry (X10S) cylinders O ₂ and Acetylene

Core Equipment

Buying an Integra® cylinder for the first time?

Don't forget your Integra® Flow Optimiser (IFO).

The IFO effectively controls gas usage via a pre-set flow rate to reduce costs. Each application has an ideal flow rate - we have a range of IFOs to choose from for each application.

Integra® Flow Optimisers (Quick connectors)

EQ Code	Prr-set Flow Rate	Material	Pressure range	Operational temperature range	Inlet connection type	Outlet connection type	Weight	Size
461340	8 L/m	Brass	Max. inlet pressure 20 bar	-20°C/ +60°C	QC acc to EN 561 - N	G3/8" right hand (RH) acc to EN 560	79g	21mm x 51mm
461341	10 L/m	Brass	Max. inlet pressure 20 bar	-20°C/ +60°C	QC acc to EN 561 - N	G3/8" right hand (RH) acc to EN 560	79g	21mm x 51mm
461342	12 L/m	Brass	Max. inlet pressure 20 bar	-20°C/ +60°C	QC acc to EN 561 - N	G3/8" right hand (RH) acc to EN 560	79g	21mm x 51mm
461343	15 L/m	Brass	Max. inlet pressure 20 bar	-20°C/ +60°C	QC acc to EN 561 - N	G3/8" right hand (RH) acc to EN 560	79g	21mm x 51mm
461344	18 L/m	Brass	Max. inlet pressure 20 bar	-20°C/ +60°C	QC acc to EN 561 - N	G3/8" right hand (RH) acc to EN 560	79g	21mm x 51mm
461345	20 L/m	Brass	Max. inlet pressure 20 bar	-20°C/ +60°C	QC acc to EN 561 - N	G3/8" right hand (RH) acc to EN 560	79g	21mm x 51mm

Variable Integra® Flow Optimiser

EQ Code	Prr-set Flow Rate	Material	Pressure range	Temperature range	Inlet connection type	Outlet connection type	Weight	Size
6043617	4-6-8-10-12-15-18-22-26	Brass	Max. inlet pressure 4 bar	-15°C/ +40°C	QC acc to EN 561 - N	6mm hose connection, G3/8" right hand (RH) acc to EN 560	400g	35mm x 105mm

Balloonium® Equipment

PR Code Description

301016 Push valve (2-pack)

301014 Universal (2-pack) flex tip

301012 Universal Plus – foil and latex (auto shut-off for foil balloons)

18075 Conversion kit dual sizer – for use with Conwin dual sizer

38614 10 foot extension hose with hand held trigger valve

498248 Balloonium® Decorator Trolley

18167 Simple variable flow controller. 4 bar. QC acc to EN 561 – N.



Supply Modes

Air Products gas experts will help you determine the most economical supply option for your particular application and geographic location.

Industrial gases are typically provided in gaseous or liquid form through a variety of supply systems.

Standard Cylinders and Cylinder Packs

There is no 'one size fits all' in terms of mode of supply. As your business flourishes, we have supply options to grow along with you. From small portable cylinders to 18 cylinder manifolded packs for high volume demand, we have a solution whatever your application.



Integra® cylinder



300 bar pressure

Ensures cylinder lasts as long as conventional 200 bar equivalents.

Compact Cylinder

Shorter, more stable cylinder but with similar gas contents to conventional larger cylinders.

Built-in Regulator

Calibrated and maintained by Air Products. Regulates outlet pressure to 4 bar. Incorporates residual pressure valve to prevent contamination of cylinder contents. No need to buy or maintain a regulator ever again!

Quick Connector

Features a built-in gas economiser. Pre-select the optimum flow rate to suit your application. Attach directly to your welding hose then snap on to the quick-connect gas outlet. Saves time and money!

Invoicing

You will receive two separate invoices, one for gas and one for the rental of the cylinder(s). Alternatively, we offer pre-paid rental schemes.

Daily Rental

We summarise your cylinder movements by rental groups. Your rental is calculated according to the time the cylinders have been in your possession. Invoices for rental will be sent around the 12th of every month, for the previous month's charges.

Gas Invoice

Your gas will be invoiced separately at the end of each calendar month.

Yearly Pre-Paid Rental Invoicing

If you have opted for pre-paid yearly rental, the full amount for the term selected will be invoiced on the 1st of the following month.

Our preferred method of payment is direct debit.

What will I see on my invoice(s)?

Delivery Charge

This covers the cost of handling and transporting the cylinders and is calculated on the number of deliveries (not cylinders).

Energy Surcharge

This charge is a recovery of the green tax which the utility company passes to Air Products.

Handling Charge

This covers the cost of handling, transporting and storing the cylinders from where they are filled to where you collect them from.

Incasso

If not paying by direct debit, this charge is related to a small levy Air Products will apply to cover the additional cash collection administrative costs.

Paper Invoice

This charge relates to the printing and postage of paper invoice documentation. To avoid this cost, we recommend our customers sign up to receive their invoices electronically by providing your e-mail address.

You can do this today at

www.airproducts.co.uk/gogreen

www.airproducts.co.ie/gogreen

Tiered Billing

Tier rental billing inflates rental prices the longer you have the cylinder in your possession. The system encourages customers to return cylinders, thereby reducing the overall rental bill and increasing Air Products cylinder stock.

Collection Charge

A charge for collecting empty cylinders where full cylinders are not delivered at the same time.

Rental Schemes

We operate with daily rental for your cylinders, meaning you only pay for what you have on-site.

Cylinder rental is calculated by our systems monthly, taking into account the number of cylinders held and the number of days they've been in a customer's possession. Rental prices will inflate the longer the cylinder is held. Rental is invoiced a month in arrears.

We also offer a rental pre-payment scheme - Optima®. This allows you to pay for cylinder rental for 12 or 24 months in advance with a significant discount.

How to Order

Order from your local Air Products stockist today. Find their details on the inside cover of this booklet or search for your local stockist at www.airproductsretail.com

Alternatively you can order from your local stockist online by searching for them on www.airproductsretail.com

Delivery

Cylinders can either be collected via your local agent or delivered.

Collection

You will receive a delivery note showing the transaction, your order number and the location from where it was collected for your records.

A container tracking number (CTN) of each product is included in your delivery note. All delivery notes are available on the MyAirProductsSM application or will be e-mailed to you within 24 hours* of delivery.

Delivery

Our mobile delivery application records and traces your order from picking up delivery.

As with collections, you will receive a delivery note with a container tracking number (CTN) of each product included. All delivery notes are available on the MyAirProductsSM application or will be e-mailed to you within 24 hours* of delivery.

* Dependant on data connectivity at point of collection / delivery

Register Today for MyAirProductsSM

Everything you need to manage your gas, at your fingertips.



Manage & Report

- Run stock holding report
- View recent deliveries and returns reports
- View all of your pre-payment contracts
- See shelf-life / expiry and re-test reports by container
- View and download recent invoices and delivery notes
- Look up your account statement
- Make payments that you owe



Tanks Management

- Enter your reading
- Update your production schedule
- Update the delivery windows
- View your tank summary



Place Order

- Reorder your current products when you're ready, or shop online for more



Get ready to register at my.airproducts.com

You will need a few details to hand to register with us for security reasons:

1. **Account Number - 'ship-to'**
2. **One of the following pieces of information relating to ship-to:**
 - Delivery Note Number
 - Invoice Number
 - Tax Registration
 - Postcode



**AIR
PRODUCTS** 